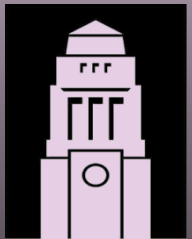


DIGITAL GEOGRAPHY *in a* WEB 2.0 WORLD



UNIVERSITY OF
LEEDS



WEDNESDAY 20 FEBRUARY 2008

WEDNESDAY 20 FEBRUARY 2008 @ The Barbican

Early Session:

GeoVUE and Splint

Paul Longley

University College London

<http://www.spatial-literacy.org>

DIGITAL GEOGRAPHY *in a* **WEB 2.0 WORLD**

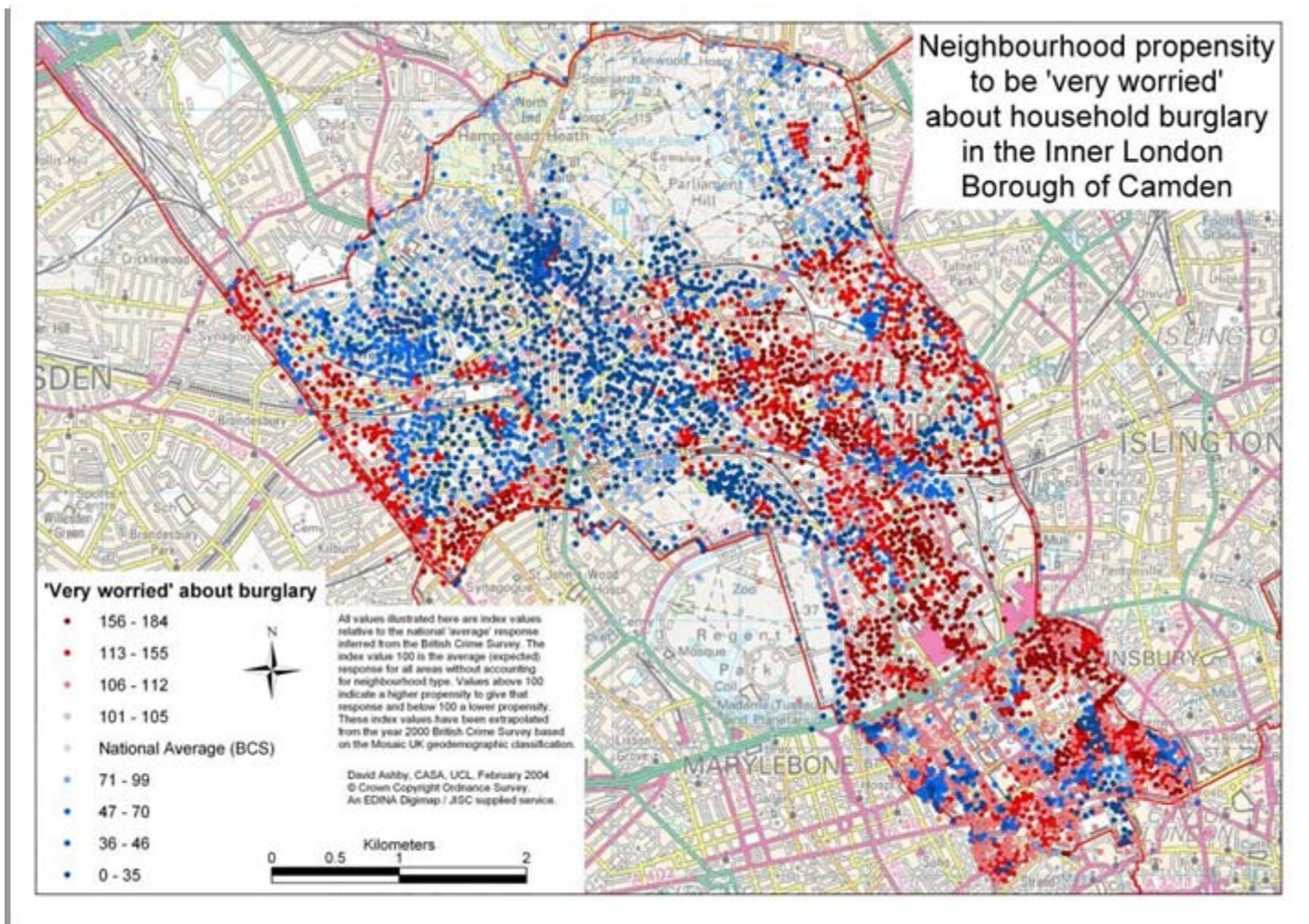


Spatial literacy @ Leics, UCL, Notts

“the formal ability to think spatially and adopt an explicitly spatial metaphor for problems and relationships”

- cognition and spatial reasoning
- how spatial problems are solved
- integrative and practical focus
- nascent interests; more than technology

Geodemographics: public goods and services



SPATIAL-LITERACY.ORG
a centre for excellence in teaching and learning

Home Contacts People Projects Resources

Geographic Information Systems and Science
Second Edition
BEST SELLER

Spatial-literacy.org is a gateway to the **Spatial Literacy in Teaching (SPLINT) Centre of Excellence** in Teaching and Learning (CETL), which is a joint initiative of the University of Leicester, University College London and the University of Nottingham. This site is hosted by University College London to provide resources and information on a variety of **teaching, research and outreach** activities, and to act as a portal to guide best practice across a range of public sector geographical information system (GIS) activities.

UCL Updates

SPLINT Fellowships

November 27, 2007

We would like to offer a number of "Visiting Fellowships" for colleagues from Higher Education Institutions (HEIs) in the UK and overseas who would like to come and work with us and use our facilities.

The Visiting Fellowship Scheme seeks to attract colleagues working in other HEIs in the UK and overseas to come and work with staff in one of the three SPLINT institutions on aspects of spatial literacy/spatial thinking for a specified period of time so that both parties can enhance their expertise.

More information can be found on the Leicester website [here].

Category: [Uncategorized]

Leicester Spatial Literacy in Teaching Website Launch

November 27, 2007

 **THE NATIONAL TRUST**

[Start a surname search](#) [Help](#)

Search for a Surname

Do you know where your surname comes from, or how many people you share it with? To find out more about your history, click on 'Search for a Surname'.

Welcome to the [National Trust Names](#) website which presents the findings of a project based at University College London (UCL) that is investigating the distribution of surnames in Great Britain, both current and historic. It allows users to search the databases that we have created, and to trace the geography and history of their family names. On each page of the website, you will find a [Help](#) link on the top-right corner which we hope will answer any questions you might have.

Coming Soon - "World Surname Profiler" from the people who brought you www.spatial-literacy.org.



Select a Word

Project Outlinks

- e-Society Profiler
- Leicester Spatial Literacy
- National Trust Names**
- OAC User Group
- Southwark Health Atlas
- Spatial Analysis Online
- Surname Profiler

Frequency and Ethnicity

Geographical Location



THE NATIONAL TRUST

Frequency and Ethnicity Map of 1998 Map of 1881

Home Help

International Comparisons

International Comparisons	Rate	As % of GB rate in 1998
Great Britain Frequency (1998)	2504	100
Great Britain Frequency (1881)	2028	
Great Britain Rate (1998)	65	
Great Britain Rate (1881)	75	
Northern Ireland	10.39	16.7
Republic of Ireland	0.00	0.0
Australia	39.80	64.0
New Zealand	70.91	114.0
United States	24.72	39.7
Canada	33.67	54.1

Geographical Location Map of 1998

Name or category: LONGLEY

Statistics about the

Frequency

Frequency

Rank Order

Occurrences per million names

Ethnicity of forenames

Ethnicity of forenames

Number of occurrences as forename

Closest similar surname (phonetic)

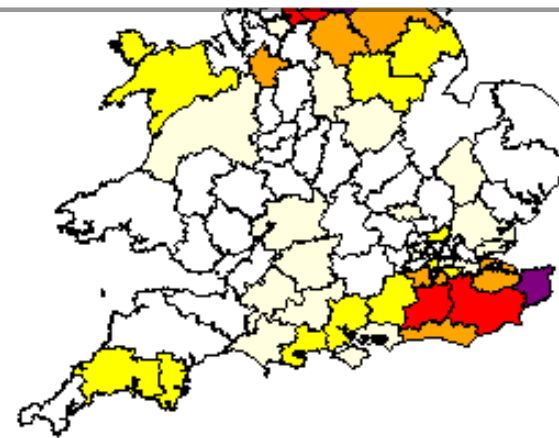
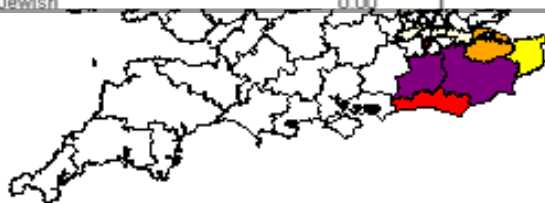
British or unknown	99.08
---English or unknown	98.39
---Irish	0.31
---Scottish	0.19
---Welsh	0.19
Jewish	0.00

Geographical Spread

Geographical Spread	Statistics
Great Britain top area (1881)	Tunbridge Wells
Great Britain top area (1998)	Wakefield
Great Britain top area index *	531
Great Britain top postal town	Battle
Number of UK gazetteer entries	7
County of gazetteer entry	More than one area
Republic of Ireland top county	
Republic of Ireland top county index *	

Social Demographics

Social Demographics	Statistics
Category of surname	English - Locational Name; Settlement Ending; Ley
Mosaic type with highest index #	Just Moving In
Index of top Mosaic type *	354
% of people with a more rural name	24
% of people with a more high-status name	36
Cultural, Ethnic, Linguistic categories of surname	British



bbc.co.uk Home TV Radio Talk Where I Live A-Z Index Search

BBC NEWS WATCH BBC NEWS IN VIDEO

UK version International version About the versions Low graphics Help

News Front Page

World
UK
England
Northern Ireland
Scotland
Wales
Business
Politics
Health
Education
Science/Nature
Technology
Entertainment

Have Your Say
Magazine
In Pictures
Week at a Glance
Country Profiles
In Depth
Programmes
RSS
What is RSS?

LATEST: Government defeated in Lords over plans to outlaw glorification of terror. More soon.
Last Updated: Tuesday, 17 January 2006, 17:54 GMT

 **New plan to permit small brothels**
A crackdown on street prostitution is unveiled by the government, but there are plans to allow small brothels.
• 'Take the desperation away'
• Prostitution plans: Reaction
• Tackling kerb crawlers

 **Powers disagree over Iran crisis**
The UK rejects an Iranian offer for more talks over its nuclear plans, while Russia and China seek compromise.

 **Man arrested over 21 July attacks**
A man has been arrested over the 21 July attempted bombings in London, Scotland Yard says.

 **Tap in your name**
The website that maps your surname against areas of Britain

 **Oscars forecast**
Who is in the frontline for an Oscar now the Globes are won?

 **New Horizons**
A guide to the mission to explore Pluto and the Kuiper Belt

OTHER TOP STORIES

- Waste incineration 'set to rise'
- Farewell for Thai murder victim
- BNP boss faces race hate charges
- Al-Jazeera 'bombing plan' denied
- Kelly's teacher vetting blueprint
- Pluto mission ready for lift-off

ALSO IN THE NEWS

- Parrot tells Chris his cheating girlfriend loves Gary
- Brits appear keen to watch TV on mobile phones

BBC SPORT

- Tennis: Murray hits at media
- Football: Saints mull Walcott bids

BBC NEWS: VIDEO AND AUDIO

COMING UP 1824GMT: Nasa launch rocket mission to Pluto

AROUND THE WORLD NOW

AFRICA
Ivory Coast's peace under threat

EUROPE
Serb telecoms crackdown escalates

BBC SPORT
BBC WEATHER
BBC NEWS

bbc.co.uk Home TV Radio Talk Where I Live A-Z Index Search

BBC NEWS WATCH BBC NEWS IN VIDEO

UK version International version About the versions Low graphics Help Contact us

News Front Page
World
UK
 England
 Northern Ireland
 Scotland
 Wales
 Business
 Politics
 Health
 Education
 Science/Nature
 Technology
 Entertainment

Have Your Say
 Magazine
 In Pictures
 Country Profiles
 In Depth
 Programmes

RSS
 What is RSS?

RELATED BBC SITES
 SPORT
 WEATHER

UK
 Last Updated: Monday, 5 June 2006, 13:11 GMT 14:11 UK

7 July report highlights failings
 Poor communication between emergency workers in the aftermath of the 7 July bombs is criticised in a report.
 • 7 July report: Survivors' views
 • What lessons have been learned?
 VIDEO Report details

Police await shot terror suspect
 Detectives wait to interview a terror suspect for the first time since he was shot in the shoulder during a police raid.

Iraqi jailed over Hassan killing
 A Baghdad court convicts a man over the abduction and murder of British aid worker Margaret Hassan.

Posh or common?
 The site that will rank your surname by social status

Science of swerve
 How physics can help Beckham score with new World Cup ball

OTHER TOP STORIES
 ▶ Hunt for double shooting gunman
 ▶ Beating-heart transplant UK first
 ▶ Brown's language call to migrants
 ▶ Breast cancer drug 'a life-saver'
 ▶ Elderly abuse 'becoming common'
 ▶ Peugeot staff vote against strike

ALSO IN THE NEWS
 Screen saving head teacher takes pupils' home computers

WORLD CUP 2006
England set to fly out to Germany

MORE SPORT
LIVE Cricket: England v S Lanka
 ▶ Rugby: Call for 'ruthless' England

Footie anthems
 Songs spearheading the quest for World Cup chart glory

BBC NEWS: VIDEO AND AUDIO
 No joke: English wine no longer laughing



ONLINE
Sun
Monday, June 5, 2006

NEWS SPORT BIZARRE LIFE FUN TV

HOME WOMAN PAGE3 FREE ADS BINGO MOVIES MUSIC

Search The Sun

Search The Web

Powered by Ask.com

DREAM TEAMS | GAMES | MOBILE | HOLIDAY DEALS | BETTING | SUN MONEY | ARCHIVE | SUN POKER | SUN SHOP OFFERS



SunShop
ENGLAND Training Shirt
As seen on Soccer Aid



SunWORLD
Travel Deals
News & Guides

Great deals on
European city breaks!



SunPoker
PLAY POKER LIKE
THE PROS!
POKER SCHOOL NOW OPEN

Take Me To

NEWS

 **Lady Macca's porno shame**
Porno past of Sir Paul's estranged wife

SPORT

 **We can beat world champs**
I'll do Crouchy dance if we win cup says Sven

BIZARRE

 **Hit the net for Sun anthem**
Buy World Cup song for just 20p online

SUN LOCAL

 **Best free ads in your area**
Post ads for free and search millions of ads

LIFE

 **Girls Aloud**

LEA|

NEWS TO YOU

Wayne is chavviest name

By EMILY HASSALL

THE most chavvy surnames in Britain are Riddock, Rushford, Brownley, Dinsdale and Parveen, a study reveals.

And they are matched by the first names Wayne, Kayleigh, Toyah, Dwayne and Zowie.

Researchers at University College London rated 26,000 names in order of social status based on income, house value, education and health.

Top came chocolate-making family Cadbury.

The poshest in England's World Cup squad were Frank Lampard and Peter Crouch, whose names put them above 96 per cent of the population.

Wayne Rooney scored in the bottom five per cent.

Posh Spice Victoria Adams was in the top 39 per cent until she wed David Beckham — and moved to the bottom 29 per cent.

Check out your name at www.spatial-literacy.org/UCLnames/Surnames.aspx.

FULL NEWS INDEX

Lady Macca's porno past
7/7 failures slammed
One day I'll be a dancer ..
Web watches US border
Superstar singer is Pin-k

Sponsored Links

The Morgan Stanley Card ...
An interest rate of 0% for 6 months on purchases and balance transfers. No...
www.morganstanley...

Royal Bank of Scotland...
0% on purchases and balance transfers for first 9 months. Typical 16.9%...
www.rbs.co.uk

SEEN A STORY?
SEND US YOUR MOBILE PHONE PICS



Leicester Mercury

blackpooltoday

MacUser



EDP 24

BBC RADIO SCOTLAND

Daily Mail
24 HOURS A DAY

HAVE I GOT NEWS
FOR YOU



METRO.co.uk

Loughborough Echo



PC PRO
COMPUTING IN THE REAL WORLD

www.timesonline.co.uk
TIMES ONLINE
The best of The Times and The Sunday Times, in real time

The Guardian Weekly

expressandstar.com

THE Sun

Guardian
Unlimited

Swindon Advertiser

EVENING
POST

Scunthorpe
Telegraph

BBC RADIO LINCOLNSHIRE



innovations report

COMPUTER
SHOPPER
BRITAIN'S BIGGEST COMPUTER MAGAZINE

sundayherald

Chronicle Live

BBC NEWS
Midlands Today

TimeOut
London

DIGITAL GEOGRAPHY in a WEB 2.0 WORLD

NCeSS

UCL

E.S.R.C
ECONOMIC
& SOCIAL
RESEARCH
COUNCIL

UNIVERSITY OF LEEDS

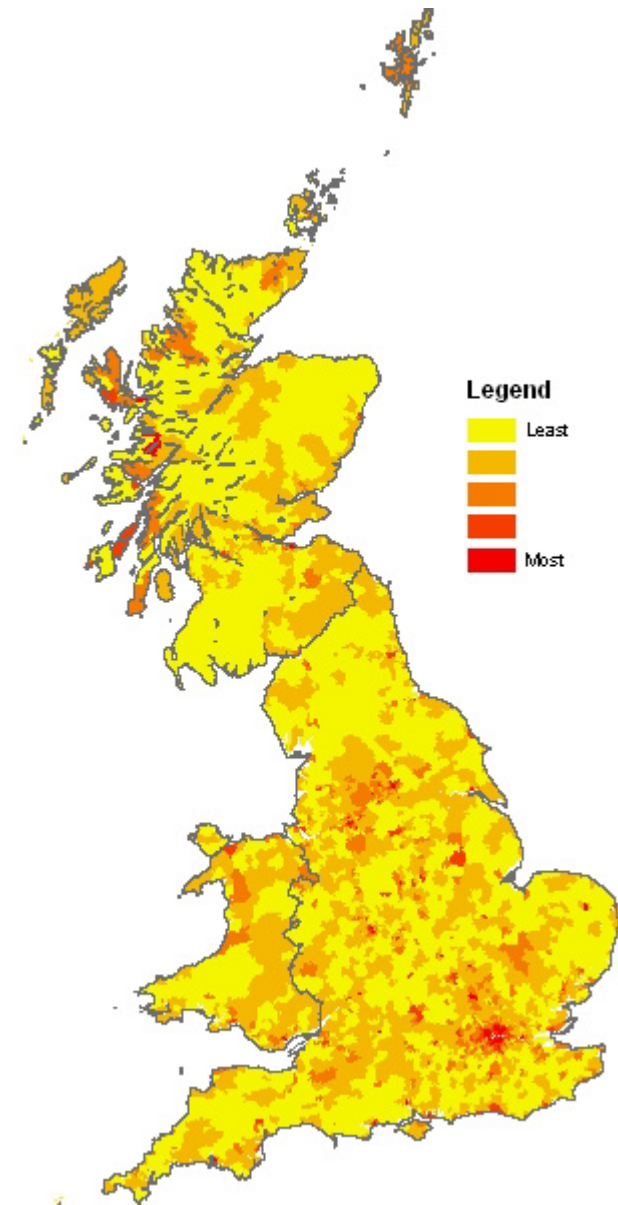
SPLINT
SPatial Literacy IN Teaching

Group C : Becoming engaged

Members of this Group often acquire their competence in the use of information technology at work, since many of them are young people working in junior white collar occupations in modern offices. They are keen to



become more expert in the use of new technologies and to use them for new applications. Many spend time browsing the Internet but without necessarily making many transactions. Many members of this Group work in large cities and may be starting a life in a house that they own, typically in one of the cheaper inner suburbs. Their use of the Internet at work may be a practice that their employers may be keen to control or reduce.



Technology

Last Updated: Tuesday, 8 August 2006, 14:11



Britain's digital divide revealed



Photo messaging is 'on the rise'

More and more photographs are being sent via camera phones over mobile networks, says research.

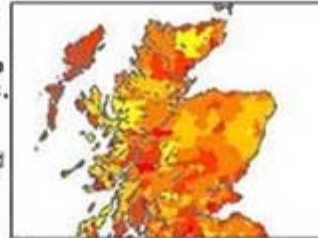


Sony wireless device who

Britain's digital tribes revealed

By Jonathan Fildes
 Science and technology reporter, BBC News

Households in Britain can be classified into 23 "e-types" depending on their access to technology, say researchers.



There are regional differences in people's access to technology.

E-types include mobile explorers, the e-committed and rational utilitarians.

The researchers, from University College London (UCL), say the profiles could be used to inform future policies on access to digital technology.

Every postcode in Britain has been assigned a classification which people can check online to see if they agree with the researcher's analysis.

"What really emerges is that almost all of the types have some interaction with technology," said Professor Paul Longley, who led the study at UCL. "In a sense we are all digital now"

Digital divide

- SEE ALSO**
- UK project to deliver rural net 15 May 06 | Science/Nature
 - Insight into UK's digital habits 27 Apr 06 | Technology
 - Mobiles aid drive for development 16 Feb 06 | Technology
 - Half of Wales 'has no web access' 26 Jan 06 | Wales

- RELATED INTERNET LINKS**
- UCL
 - ESRC
 - Check your postcode (may be slow due to heavy traffic)
 - Experian
- The BBC is not responsible for the content of external internet sites

- TOP TECHNOLOGY STORIES**
- Britain's digital tribes revealed
 - Photo messaging is 'on the rise'
 - Sony taps instant message crowd
- RSS** | What is RSS?

- MOST POPULAR STORIES NOW**
- MOST E-MAILED** **MOST READ**
- Deaths confirmed in M25 accident

DON'T MISS



Internet timeline
 Interactive highlights from the last 15 years of the web



Unwired world
 Testing out Google's free wi-fi service in California

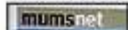


Night frights
 Forbidden Siren returns to haunt gamers again

VIDEO AND AUDIO NEWS

HIDE

AUDIO CHOICE



Chatroom for mums

HEADLINES



Philippine volcano erupts

MOST POPULAR STORIES

Most read Technology stories from each of the past five days



William Orbit

William Orbit is the soothing electro wizzard who helped re-ignite Madonna's career by producing and co-writing her 'Ray Of Light' album. Orbit's new album 'Hello Waveforms' – the follow-up to 2000's 'Pieces In A Modern Style' – is out on Monday February 20.

What's your favourite city?

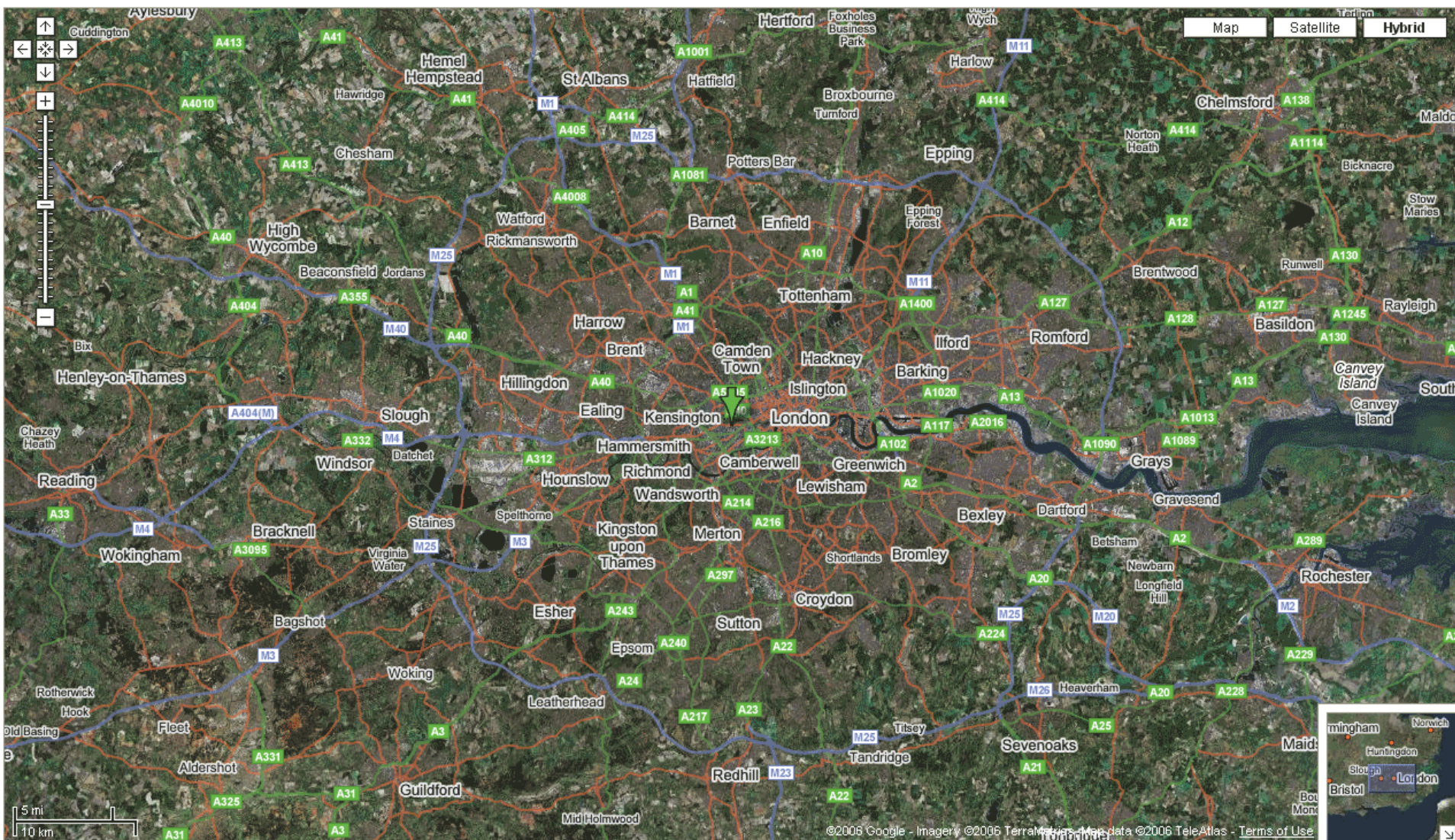
You'll think I'm sucking up, but it's London. No question. I've lived abroad, but I'm back now and living in the centre of London. I love it.

Favourite website?

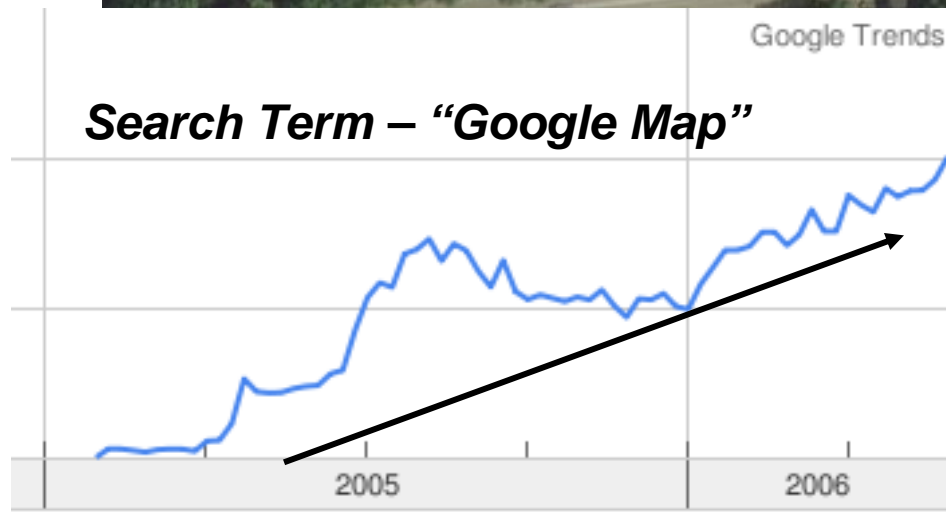
I've discovered one today that tells you where people with the same surname as you live in the UK (spatial-literacy.org/names)

Presumably your real surname isn't Orbit?

No, it's not. But my mum is called Ferrari. So I could've been William Ferrari!



- 30K Developer Sites in first 12 months using Google Maps API
- 51 million independent web mentions of Google Map API
- 130K Blog Posts in first 12 months mentioning Google Maps
- 1 billion installs (downloads?) in first 12 months Google Earth
- 67cm resolution satellite photos for 30% of Earth's population
- *Michael Jones (Google Chief Technical Officer) - 2006*



Source: <http://meharties.blogspot.com/2006/07/geoweb-2006-day-5-keynote-address-and.html>

LONDON PROFILER

BETA VERSION

Postcode Go! - SELECT A BOROUGH -
<http://www.casa.ucl.ac.uk/mauriz> Show Hide

Map Satellite Hybrid

- MULTICULTURAL ATLAS OF LONDON
- E-SOCIETY
- HIGHER EDUCATION
- CENSUS OUTPUT AREA CLASSIFICATIONS
- INDEX OF MULTIPLE DEPRIVATION
- HEALTH
- NESTORIA



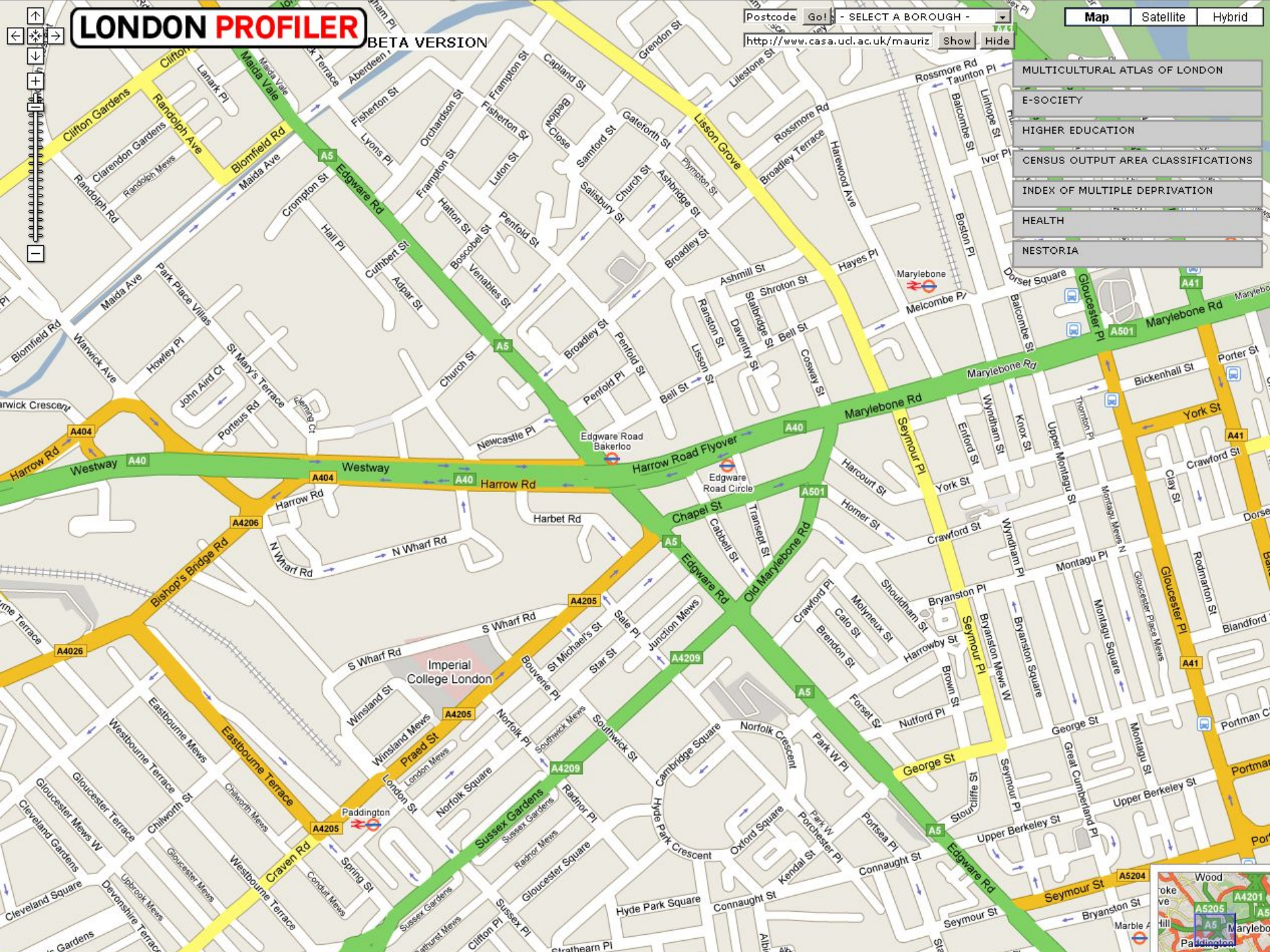
LONDON PROFILER

BETA VERSION

Postcode Go!
<http://www.casa.ucl.ac.uk/mauriz>

☒ Map ☐ Satellite ☐ Hybrid

- MULTICULTURAL ATLAS OF LONDON
- E-SOCIETY
- HIGHER EDUCATION
- CENSUS OUTPUT AREA CLASSIFICATIONS
- INDEX OF MULTIPLE DEPRIVATION
- HEALTH
- NESTORIA



LONDON PROFILER

BETA VERSION

BANGLADESHI POPULATION - OUTPUT AREA LEVEL, 2004

Postcode Go! - SELECT A BOROUGH -

<http://www.casa.ucl.ac.uk/mauriz> Show Hide

Map Satellite Hybrid

0% 25% 50% 75% 100%

MULTICULTURAL ATLAS OF LONDON

0 - 5%
5% - 10%
10% - 20%
20% - 30%
30% - 50%
> 50%

Help

Bangladeshi

E-SOCIETY

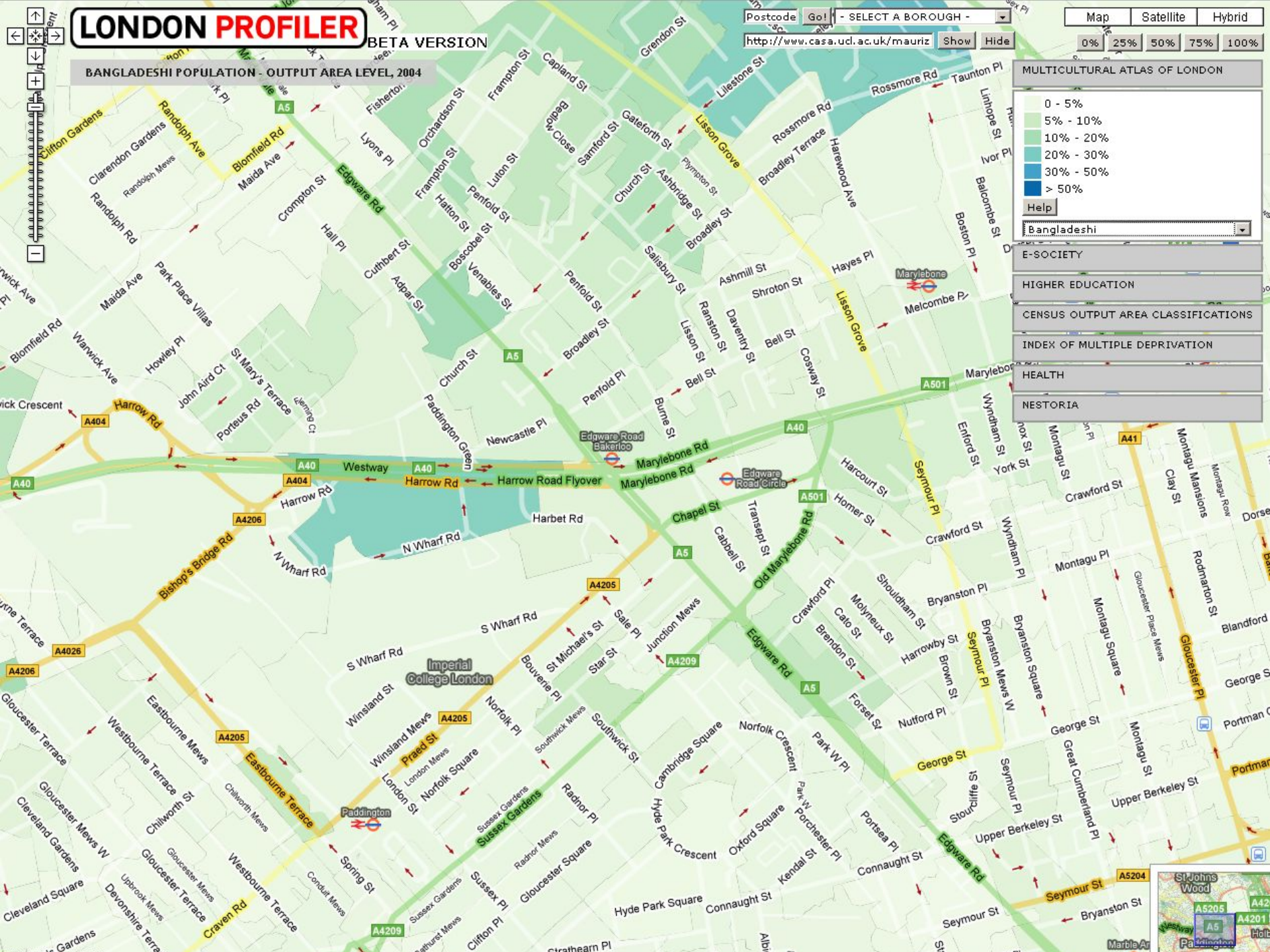
HIGHER EDUCATION

CENSUS OUTPUT AREA CLASSIFICATIONS

INDEX OF MULTIPLE DEPRIVATION

HEALTH

NESTORIA



LONDON PROFILER

BETA VERSION

E-SOCIETY CLASSIFICATION - OUTPUT AREA LEVEL

Postcode Go! - SELECT A BOROUGH -
<http://www.casa.ucl.ac.uk/mauriz> Show Hide

Map Satellite Hybrid
0% 25% 50% 75% 100%

MULTICULTURAL ATLAS OF LONDON

E-SOCIETY

- ☒ E-unengaged
- ☒ E-marginalised
- ☒ Becoming engaged
- ☒ E for entertainment and shopping
- ☒ E-independents
- ☒ Instrumental E-users
- ☒ Electronic orderers
- ☒ E-experts

Help

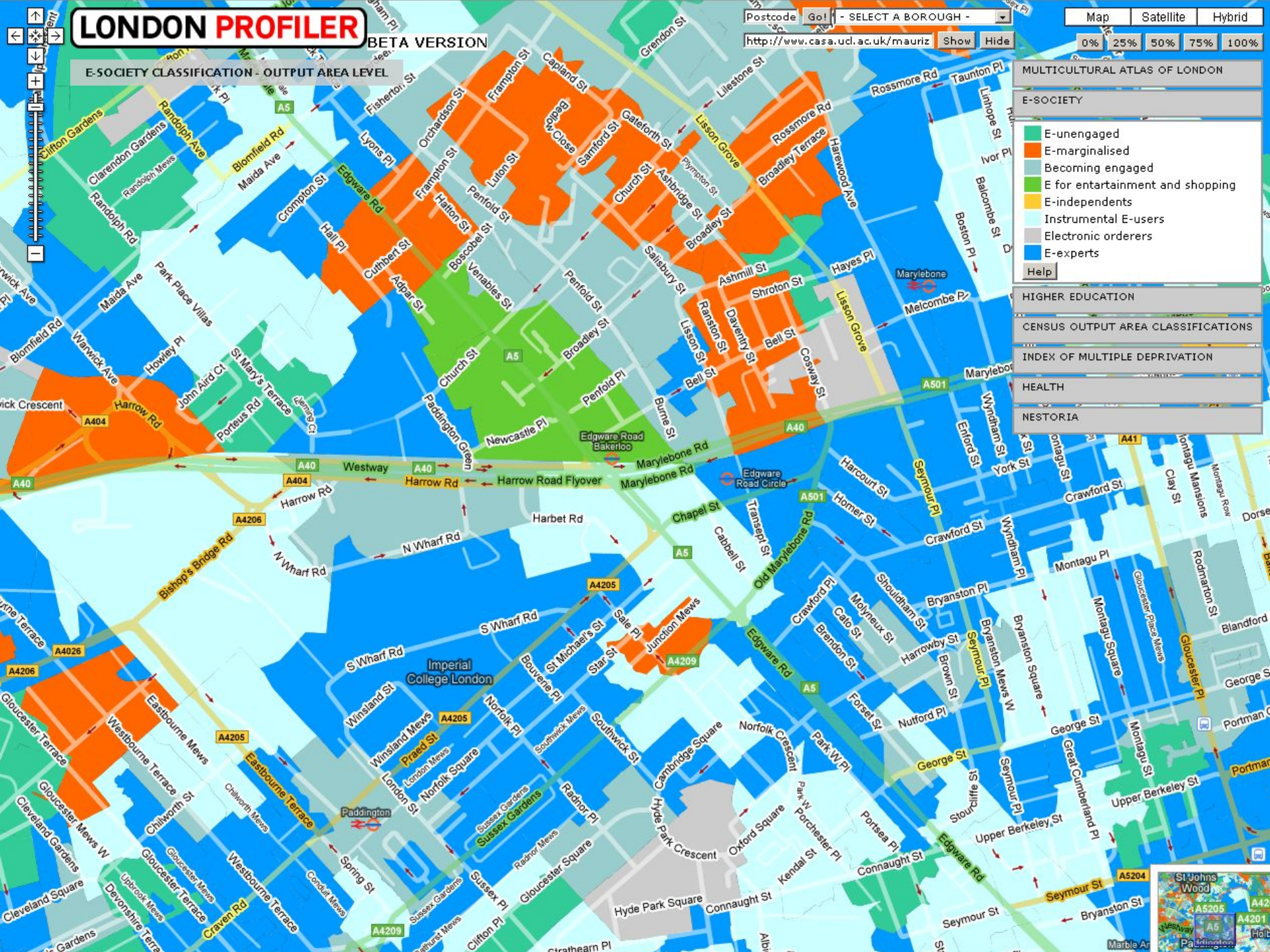
HIGHER EDUCATION

CENSUS OUTPUT AREA CLASSIFICATIONS

INDEX OF MULTIPLE DEPRIVATION

HEALTH

NESTORIA



GeoVUE and Splint

- www.publicprofiler.org/worldnames
 - www.londonprofiler.org
 - www.spatial-literacy.org
 - www.maptube.org
-
- ‘business engagement’: ESRI
 - ‘on the fly’ bespoke geodemographics
 - health, policing, education